



PowerCat™ 6 UTP Solutions

What we do

For over 30 years Molex has manufactured comprehensive copper and optical fiber data transport solutions for the transmission of voice, data and imaging signals

Peace of mind

The PowerCat 6 system is covered by a Global 25 Year Product, System Performance and Application Assurance Warranty

Standards Compliance

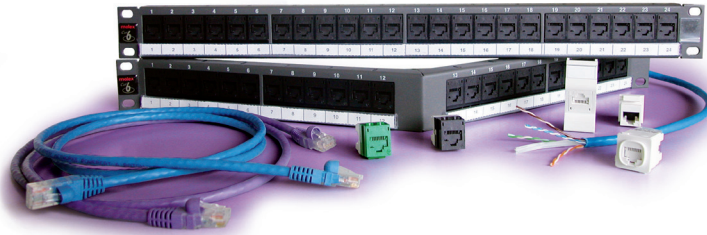
TIA/EIA 568-B.2-1
ISO/IEC 11801:2002
AS/NZS 3080:2002
EN 50173:2007



PowerCat™ 6 - UTP Solutions

The PowerCat™ 6 range of Category 6 compliant products provide a high performance end-to-end UTP copper solution, designed to meet and exceed all relevant international performance standards, including TIA/EIA 568-B.2-1, ISO/IEC 11801:2002 and AS/NZS 3080:2003.

Consisting of cable, patch panels, patch cords and work area modules, the PowerCat 6 - Category 6 solution provides a significant leap in performance and data transmission capability when compared to Category 5e.



Highlights of the PowerCat 6 solution

- Total end-to-end horizontal cabling solution
- Compliant to TIA/EIA 568-B.2-1, ISO/IEC 11801:2002 and AS/NZS 3080:2003
- Superior headroom to that of Category 5e performance
- Backwards compatible with Molex Category 5e systems – ensuring support for legacy applications
- Independently tested and verified

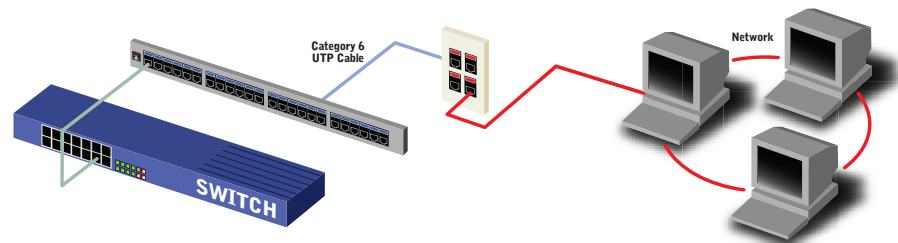
What is the Advantage of Category 6 over Category 5e?

Put simply, a Category 6 solution provides positive PowerSum ACR beyond 200Mhz. This means that a Category 6 compliant network infrastructure can provide twice the normal bandwidth of existing Category 5e cabling systems. Other benefits, such as enhanced Return Loss performance also ensure support for high-speed, bidirectional applications like Gigabit Ethernet.

Superior product performance

The PowerCat 6 solution utilizes our RJ-45 DataGate™ connector technology. The DataGate connector features a patented 'spring-loaded shutter' providing protection from dust and contaminants, and the patented V-shaped IDC contacts improve installation speed and enhance cable retention.

Designed to support high speed networks, cable is available in both PVC or LSOH sheaths, with patch cords available in PVC sheaths. An angled patching solution is also available to support high density installations where communications room space is limited.



Independently tested

To ensure that our product consistently performs to the optimum performance we partnered with Intertek ETL SEMKO - the world's largest product and commodities testing organization - to objectively test and verify the Channel and Link performance of the PowerCat 6 solution.

Every 3 months, ETL randomly purchase Molex Category 6 products off the open market and tests them in channel environments to verify performance to the TIA/EIA 568-B and ISO/IEC 11801 standards. This testing is completed independently of Molex and in the event that any products fail, ETL verification status is removed. Our continuous affiliation to this program provides a further safety net to our customers, ensuring they always receive the best quality product.



PowerCat™ 6 UTP Solutions

Americas

Corporate Headquarters
+1 630 969 4550

Asia Pacific

Australia
+61 3 9971 7111
China
+86 21 5048 0889
India
+91 80 4129 3500

EMEA

United Kingdom
+44 (0)1489 572 111
Czech Republic
+420 222 191 418
Poland
+48 22 333 81 50
Russia
+7 495 642 64 55
Ukraine
+38 (044) 494 2642
Middle East
+971 4 288 7573
South Africa
+27 11 513 4223



PowerCat™ 6 - UTP Solutions

Ordering Information

250 UTP Cable

Order No.	SAP No.	Description
CAA-0195P-02	181740024	PowerCat 6 250 4 Pair Cable, Plenum, White
CAA-0195P-08	181740025	PowerCat 6 250 4 Pair Cable, Plenum, Light Gray
CAA-0195P-BL	181740023	PowerCat 6 250 4 Pair Cable, Plenum, Blue
CAA-0195R-02	181740027	PowerCat 6 250 4 Pair Cable, Riser, White
CAA-0195R-08	181740028	PowerCat 6 250 4 Pair Cable, Riser, Light Gray
CAA-0195R-BL	181740026	PowerCat 6 250 4 Pair Cable, Riser, Blue

500 UTP Cable

Order No.	SAP No.	Description
CAA-0181P-02	181700030	PowerCat 6 500 4 Pair Cable, Plenum, White
CAA-0181P-08	181700028	PowerCat 6 500 4 Pair Cable, Plenum, Light Gray
CAA-0181P-BL	181700031	PowerCat 6 500 4 Pair Cable, Plenum, Blue
CAA-0181R-02	181700025	PowerCat 6 500 4 Pair Cable, Riser, White
CAA-0181R-08	181700023	PowerCat 6 500 4 Pair Cable, Riser, Light Gray
CAA-0181P-BL	181700024	PowerCat 6 500 4 Pair Cable, Riser, Blue

Patch Panels

Order No.	SAP No.	Description
PID-00146	182080291	24 Port PowerCat 6 Patch Panel, 568A/B, 1U
PID-00147	182080292	48 Port PowerCat 6 Patch Panel, 568A/B, 2U
PID-00156G	182080297	24 Port Angled PowerCat 6 Patch Panel, 568A/B, 1U - Graphite
PID-00156B	182080298	24 Port Angled PowerCat 6 Patch Panel, 568A/B, 1U - Black
PID-00157	182080299	48 Port Angled PowerCat 6 Patch Panel, 568A/B, 2U - Graphite
PID-00157B	182080300	48 Port Angled PowerCat 6 Patch Panel, 568A/B, 2U - Black

Patch Cords

Order No.	SAP No.	Description
PCD-02040-**	Consult Molex	PowerCat 6 U/UTP Patch Cord PVC 0.5m
PCD-02041-**	Consult Molex	PowerCat 6 U/UTP Patch Cord PVC 1m
PCD-02047-**	Consult Molex	PowerCat 6 U/UTP Patch Cord PVC 1.5m
PCD-02042-**	Consult Molex	PowerCat 6 U/UTP Patch Cord PVC 2m
PCD-02043-**	Consult Molex	PowerCat 6 U/UTP Patch Cord PVC 3m
PCD-02044-**	Consult Molex	PowerCat 6 U/UTP Patch Cord PVC 5m
PCD-02045-**	Consult Molex	PowerCat 6 U/UTP Patch Cord PVC 7m
PCD-02046-**	Consult Molex	PowerCat 6 U/UTP Patch Cord PVC 10m

Note: Insert color code in place of ** in part number when ordering Patch Cords:
OC=Red, OE=Grey, OH=Blue, OJ=Green, OK=Yellow, OW=White, OP=Purple, ON=Orange, BK=Black

Work Area Jacks

Order No.	SAP No.	Description
KSJ-00018-02	181970080	PowerCat 6 DataGate Jack, 568A/B - White
KSJ-00033-02	181970158	PowerCat 6 Keystone Jack, 8W, 568A/B - White

Wallplates

Order No.	SAP No.	Description
WSY-00001-02	181770031	6 Port Synergy Wallplate - Unloaded - White
WSY-00002-02	182080075	4 Port Synergy Wallplate - Unloaded - White
WSY-00003-02	181770080	3 Port Synergy Wallplate - Unloaded - White
WSY-00004-02	181770040	4 Port 1U Synergy Wallplate-Unloaded - White
WSY-00005-02	181770008	4 Port Angled Synergy Wallplate - Unloaded - White
WSY-00006-02	181770010	2 Port Angled Synergy Wallplate - Unloaded - White
WSY-00018-02	181770068	2 Port Synergy Wallplate - Unloaded - White
WPJ-00007-02	184000536	1 Port Streamline Plastic Wallplate - Unloaded - White
WPJ-00008-02	184000539	2 Port Streamline Plastic Wallplate - Unloaded - White
WPJ-00009-02	184000542	3 Port Streamline Plastic Wallplate - Unloaded - White
WPJ-00010-02	184000545	4 Port Streamline Plastic Wallplate - Unloaded - White
WSS-00001	184000551	1 Port Stainless Steel Streamline Wallplate - Unloaded
WSS-00002	184000316	2 Port Stainless Steel Streamline Wallplate - Unloaded
WSS-00003	184000552	3 Port Stainless Steel Streamline Wallplate - Unloaded
WSS-00004	184000553	4 Port Stainless Steel Streamline Wallplate - Unloaded
WSS-00006	184000554	6 Port Stainless Steel Streamline Wallplate - Unloaded

Note: Work Area Jacks and Wallplates are available in various colours to suit all environments and decor. Please refer to our website for more information.