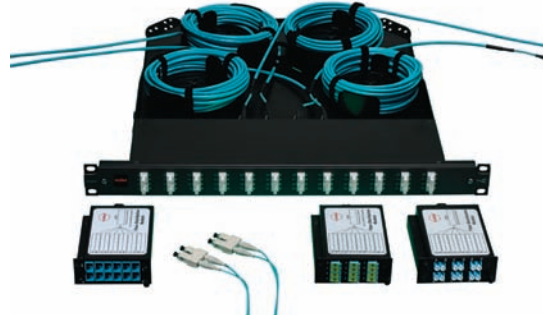


# ModLink - Plug & Play Fiber Solution

Molex's ModLink™ system is a cost-effective, quick and easy fiber system, for backbone and fiber to the desk applications. The ModLink system provides premium factory-controlled optical performance, enabling flexible system configuration and fast, economical installation.

ModLink suits most fiber installations, but is ideal for mission critical applications, such as Data Centers & Storage Area Networks, applications where fast installation is paramount, and environments in which moves, adds and changes are frequent or managed in-house.



## Highlights of ModLink

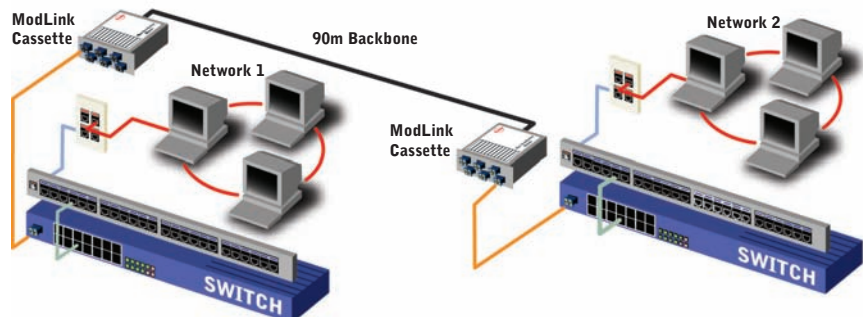
- Provides a flexible system configuration/reconfiguration, and fast, economical installation
- In the event of damage or failure to a vital fiber backbone, the link can be quickly re-established without the need of technicians - no installation training necessary
- A viable tool for rapid deployment of an alternative data recovery system
- Factory terminated, and therefore guaranteed to perform to the highest industry standards
- Laser Optimized 50/125µ (ISO Classification OM3) grade optical fiber specifically designed to maximize performance
- Industry-leading low insertion loss of 0.75dB making it ideal to support 10G applications

## What are the Benefits of Pre-Terminated Technology?

Pre-terminated solutions provide the advantage that each fiber connection is factory terminated. Each individual connector is pre-wired into a MTP/MPO interface and tested in-house to ensure correct fiber bend radius has been maintained and that each connector provides optimum performance. Therefore upon installation the user simply needs to plug the cable into the rear of the cassette and the link is operational – providing the user with an excellent solution for fast track installations with guaranteed performance.

## Additional Product Features

Compactly sized, individual ModLink cassettes simply click into Molex's range of rack mount fiber management panels and enclosures, providing up to 48 ports in a 1U rack space. They offer front port identification plus labeling field on the cassette top for fiber documentation. Cables utilize OFNP or LSZH rated round loose tube cable featuring a flexible outer jacket that is easy to bend, route and install.



## Supports all major Fiber Connector Technologies

The ModLink system is available to support LC, SC, or MT-RJ fiber connectivity. Providing up to 12 fiber ports in each cassette, the SC and LC range also feature Molex's patented shuttered adapter technology which protects each connector from dust and contaminants, while ensuring that the user is protected from harmful laser light emissions.

Designed to adhere to TIA/EIA 568-B.3, ISO/IEC 11801:2002 and AS/NZS 3080:2003 international fiber performance standards, the ModLink system supports OM1, OM2, OM3 and OS1 fiber applications.



## ModLink™ Plug & Play Fiber Solution

### What we do

For over 20 years Molex has manufactured comprehensive copper and optical fiber data transport solutions for the transmission of voice, data and imaging signals

### Peace of mind

The ModLink system is covered by a Global 25 Year Product, System Performance and Application Assurance Warranty

### Standards Compliance

TIA/EIA 568-B.3  
ISO/IEC 11801:2002  
AS/NZS 3080:2003





# ModLink - Plug & Play Fiber Solution

## ModLink™ Ordering Information

### Cable

Polarity Method A Part Number	Polarity Method C Part Number	Fibre Type
91-X2122-2YYY	91-X2133-2YYY	ModLink Cable Multimode OFNP 62.5/125µ OM1
91-X2122-6YYY	91-X2133-6YYY	ModLink Cable Multimode OFNP 50/125µ OM2
91-X2122-6EYYY	91-X2133-6EYYY	ModLink Cable Multimode OFNP 50/125µ OM3 (10G)
91-X2122-4YYY	91-X2133-4YYY	ModLink Cable Singlemode OFNP OS1
91-X2222-2YYY	91-X2233-2YYY	ModLink Cable Multimode LSZH 62.5/125µ OM1
91-X2222-6YYY	91-X2233-6YYY	ModLink Cable Multimode LSZH 50/125µ OM2
91-X2222-6EYYY	91-X2233-6EYYY	ModLink Cable Multimode LSZH 50/125µ OM3 (10G)
91-X2222-4YYY	91-X2233-4YYY	ModLink Cable Singlemode LSZH OS1

Length Requirements: Insert length requirement in place of YYY in part number when ordering.

## ModLink™ Plug & Play Fiber Solution

### Americas

Corporate Headquarters  
+1 630 969 4550

### Asia Pacific

Australia  
+61 3 9971 7111  
China  
+86 21 5048 0889  
India  
+91 80 4129 3500

### EMEA

United Kingdom  
+44 (0)1489 572 111  
Czech Republic  
+420 222 191 418  
Poland  
+48 22 32 60 720  
Russia  
+7 495 642 64 55  
Ukraine  
+38 (044) 494 2642  
Middle East  
+971 4 288 7573  
South Africa  
+27 11 807 2577



### Patch Panels

Order No.	Description
RTMLPQLC480S1	Quad LC, Shuttered MPO, OS1 Singlemode, 48 Fiber, 0.90 dB
RTMLPQLC480M1	Quad LC, Shuttered MPO, OM1 62.5µ Multimode, 48 Fiber, 0.90 dB
RTMLPQLC480M2	Quad LC, Shuttered MPO, OM2 50µ Multimode, 48 Fiber, 0.90 dB
RTMLPQLC480M3	Quad LC, Shuttered MPO, OM3 50µ Multimode, 48 Fiber, 0.75 dB

### Cassettes

62.5/125µm (OM1)	50/125µm (OM2)	50/125µm (OM3)	9/125µm (OS1)	Description
MLCDSC120M1	MLCDSC120M2	MLCDSC120M3	MLCDSC120S1	12 Fiber ModLink, Duplex SC
MLCDLC120M1	MLCDLC120M2	MLCDLC120M3	MLCDLC120S1	12 Fiber ModLink, Duplex LC
MLCMTR120M1	MLCMTR120M2	MLCMTR120M3	MLCMTR120S1	12 Fiber ModLink, MTRJ
MLCQLC120M1	MLCQLC120M2	MLCQLC120M3	MLCQLC120S1	12 Fiber ModLink, Quad LC